

KINOSHITA FAMILY Serving in Tokyo, Japan

Dear Friends,

Early Summer, 2011

Two months have passed since the massive M9.0 quake hit off the East cost of Japan. The temperature will reach 77°F coming week here in Tokyo. City Baptist Church still continues to have Sunday morning services after occasional closures of the leasing building during scheduled blackouts. We had sought God's direction whether we ought to look for different space to rent for church services, yet God let us stay at the same building. Our apartment has been in repair due to the damages and cracks from the quake.



EASTER

Because the Easter is not celebrated in Japan, we created and distributed Easter Sunday invitations. Though the Japanese government was not encouraging Tokyo residents to go out right after the quake and during all these blackouts, we had a new comers on Easter. A young couple, Mr. & Mrs. Ishida wept during Easter message and they raised their hands for closing invitation. After service I was able to lead them to Christ!



Also our 4-year old son Christopher asked me after Easter service if I can explain about the meaning of the cross. Before he was not able to understand the concept of our sin, but this time he believed that Jesus died on the cross for our sins. We prayed together and Christopher confirmed his salvation!

KOGA FAMILY

Pastor Koga, who is the earthquake refugee, preached at City Baptist Church on 3/27/11. Nathan and Pastor Koga were college roommates as we mentioned on last newsletter. Since Koga family ran out of harms way only the Bibles in their possessions, the church provided them men's suit, other clothes, and some toys for their 3-year old child. We are blessed to be able to raise the love offering to the Koga's as well. Pastor Koga wept with joy, and now returned to their home town.

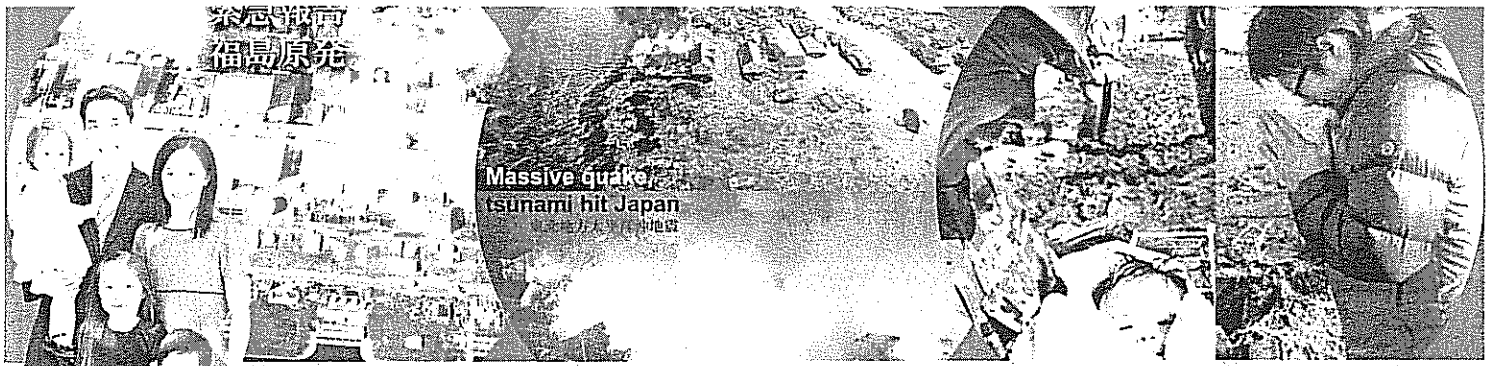


DISASTER AREA



On 4/3/11 right after Sunday morning worship service, we went to the earthquake disaster area to deliver the van full of supplies to 6 independent Baptist churches. While hearing the noise that the bulldozers made to clear the debris, we saw no sign of community along the shore after Tsunami had hit. Pastor Abe of Ishikawa Baptist Church, which is located only 35 miles away from Fukushima nuclear power plant, rejoiced the Lord for the very first water and food supplies since the quake. Pastor Abe said he was starting to worry after all the groceries were sold out at the stores. He wants to publicly thank for all your prayers and love offerings.

Next Page→

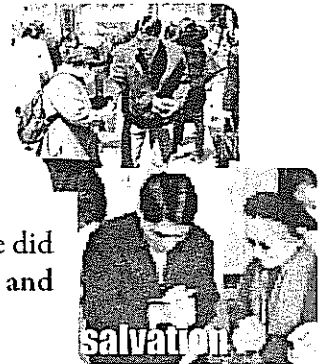


KINOSHITA FAMILY Serving in Tokyo, Japan

Early Summer. 2011 No.2.

EARTHQUAKE TRACTS

We created special tracts stating the quake was indeed message from God about the end time. We distributed these earthquake tracts at Shibuya and Shinjuku stations, two of the most famous and densely populated neighbours in Tokyo. Shibuya is a large neighbour full of offices, shops and places for entertainment. Shinjuku is one of the most important junctions in the whole transport system. It is estimated more than 2 millions people travel by the three underground lines, two private urban railways, and the Japan railways each day. I got to share a Gospel for 15 minutes with a lady who happened to be walking by with sadness in her face. She did not get saved then, however, I saw her again few hours later. This time she let me pray with her and she accepted Jesus Christ!



GOSPEL NEWSPAPER

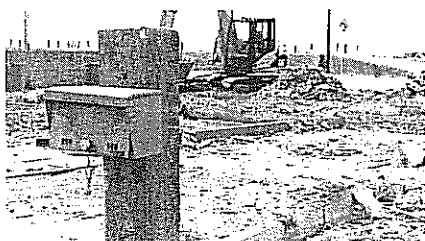
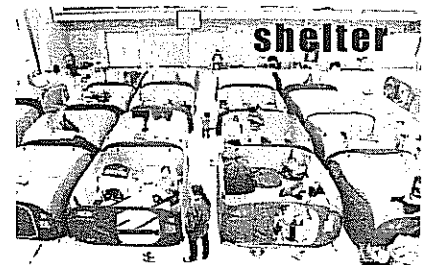


There are still many refugees from North, who have been forced to live in Tokyo after the quake. NGO, Japanese government, the local hotels, or local gymnasiums in Tokyo area are trying to provide housings for the estimate of up to 20,000 refugees. City Baptist Church started visitations to those shelters few times a week. Our mission is to share the Gospel, and pray with them - the refugees are fearful for their future. God has inspired me to reach as many refugees as possible during this difficult recovery from the quake and I came up with the reading material call "Gospel Newspaper". I would like at least 15,000 copies printed and am planning to create 5 different issues. Please pray for Gospel Newspaper to become great witnessing tool among refugees in all the shelters. If you live close to Tokyo and can help us distributing, I will need your help!

We are thankful for your prayers and for your support.

In Christ

Nathan and Ruth Kinoshita, Serving in Tokyo, Japan



SENDING CHURCH LANCASTER BAPTIST CHURCH, LANCASTER, CA / PASTOR PAUL CHAPPELL
 SUPPORT INFO. P.O. BOX 9215, CHATTANOOGA, TN 37412 (SUPPORT HANDLED THOUGH BIM1)
 1-19-12-105 TAMAGAWA DENENCHOFU, SETAGAYA, TOKYO, 158-0085 JAPAN
 KINOSHITA@TOKYOMISSION.NET